

# Our Speakers

## Mint House Case Study



**Marshall Phillips**

CohnReznick

**Moderator**



**Gordon Fraley**

Altus Realty



# Mint House - Washington D.C. Downtown





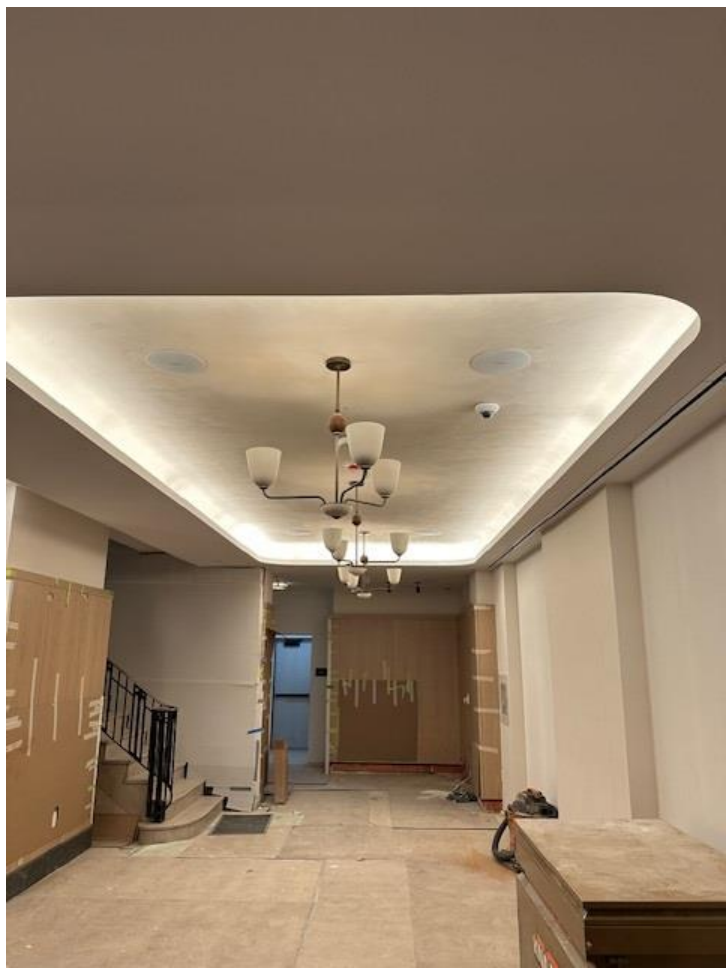


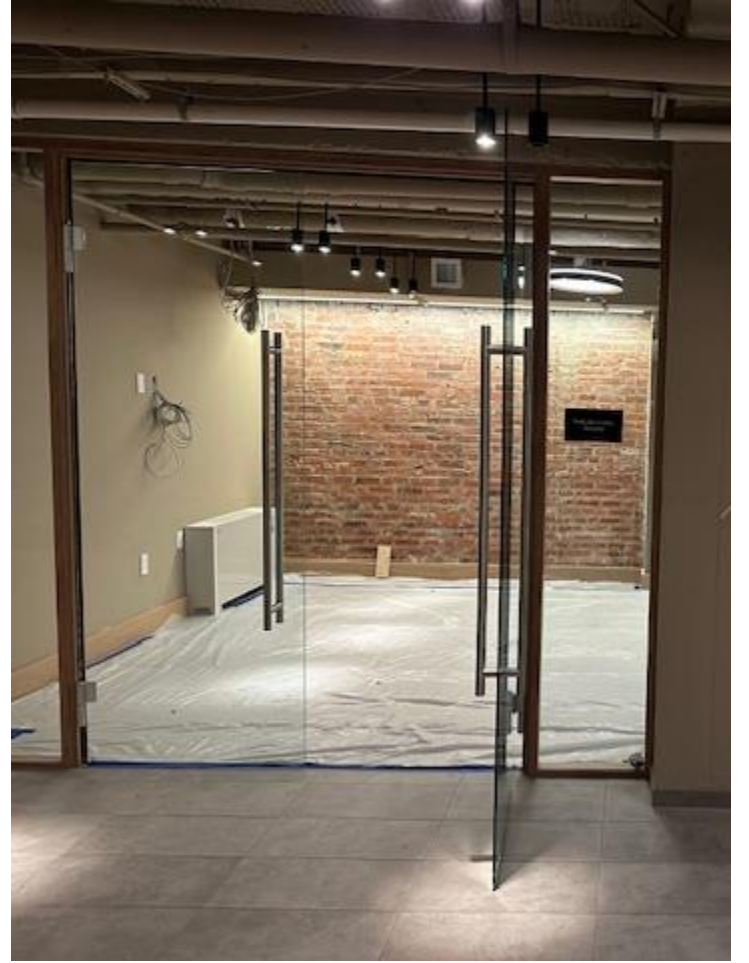
MINT HOUSE

1010

Handwritten menu on a chalkboard sign, including items like 'Add Top Bun \$1.50', 'Bacon \$1.00', 'Cheddar \$1.00', 'Mushrooms \$1.00', 'Onions \$1.00', 'Peppers \$1.00', 'Sausage \$1.00', 'Turkey \$1.00', 'Veggies \$1.00', and 'Waffle \$1.00'.







# Thank you!

## Mint House Case Study



**Marshall Phillips**

CohnReznick

**Moderator**



**Gordon Fraley**

Altus Realty